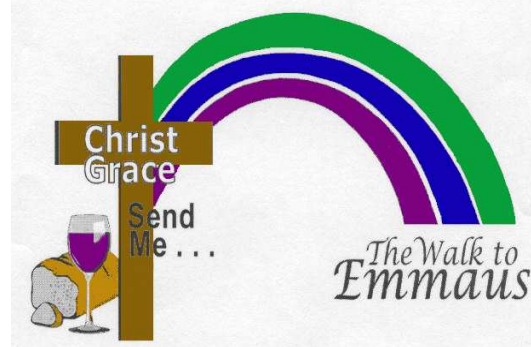


Lansing Emmaus Community

Footprints

Number 10-3

September, 2010 - October, 2010



Community Lay Director, Russ Fries
(810) 625-5296, LAE.CLD@gmail.com

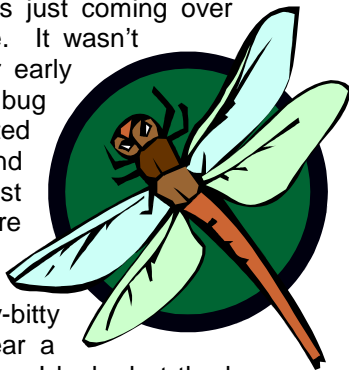
Outreach Chair, Roger Silverthorn
(989) 875-4821, LAE.ACLD@gmail.com

Team Selection, Judy McPherson
(517) 627-2712,
LAE.TeamSelection@gmail.com

Community Spiritual Director, Becky Morrison
(517) 645-7701 pumcpastor@yahoo.com

Bug Guts

I was driving to work the other morning, driving east on I-69. I was doing my usual praying for my family and friends, the Emmaus Board, Community and the upcoming walks when I noticed something. The sun was just coming over the horizon. I could hardly see. It wasn't that the sun was in my eyes or early morning fog. There were a lot of bug guts on my windshield. I started looking at what was left behind and noticed that the bugs had just peppered the windshield. There was all manner of color and streaking. Some big blotches, some small ones, some real itty-bitty ones. Suddenly, I started to hear a buzzing sound. I realized the more I looked at the bugs the more distracted I was getting. I was not really paying attention to what direction I was going and started hitting the rumble strip. Thank God for rumble strips!



We get to the point in our lives where we know where we're going and have a plan, but don't really see where we are going. Maybe we get blinded by flashy things we want or think we need. We start paying attention to too many other things, things that get in our way, other details, or unimportant things that distract us away from Christ and our 4th Day journey. On our way to developing our leadership skills with Lansing Area Emmaus, we find those same obstructions. On the Walk some people want to try this or that and slowly, gradually, move away from the model. Others will say well, you know... These changes that are going on are so different, we haven't done this before, we haven't done that before, we're going into uncharted territory. I say we're not. I believe that the way is very clear, if you don't think so, look in the rear view mirror to look where we've come from in just a few short years. Yeah, there are some bug guts on our windshield and people are paying attention to those little problems, little obstructions more than the big picture, what is actually important. Really, the most important thing is our walk with Christ. The question to ask yourself is: "Is the road you're on leading to Christ and your 4th day journey?". If not it might be time to clean the windshield.

In His Service,
Russ Fries

"But the fruit of the Spirit is love, joy, peace, patience, kindness, goodness, faithfulness, gentleness, self-control; against such there is no law." Galatians 5: 22-23

In the last newsletter I offered a story about pebbles that became precious jewels and likened them to the precious gifts that make up the fruit of the Spirit. The Walk to Emmaus experience gives us the opportunity to not only see the fruit of the Spirit in action in the lives of those on a team, but as our lives are transformed by God's grace, that fruit is seen in us as we serve God and others.

The fruit of the Spirit is Love. Love can be such a confusing word for someone who doesn't know God's unconditional love. Our lives are to be a reflection of God's love to everyone. Some days that seems like a daunting task because of the challenges we are given. Yet, as followers of Christ love is at the core of who we are.

G. Curtis Jones offers a legend that reflects this fruit of the Spirit ~ love. Legend has it that a wealthy merchant traveling through the Mediterranean world looking for the distinguished Pharisee, Paul, encountered Timothy, who arranged a visit. Paul was, at the time, a prisoner in Rome. Stepping inside the cell, the merchant was surprised to find a rather old man, physically frail, but whose serenity and magnetism challenged the visitor. They talked for hours. Finally the merchant left with Paul's blessing. Outside the prison, the concerned man inquired, "What is the secret of this man's power? I have never seen anything like it before."

"Did you not guess?" replied Timothy. "Paul is in Love." The merchant looked bewildered. "In Love?"

"Yes," Timothy answered, "Paul is in Love with Jesus Christ." The merchant looked even more bewildered. "Is that all?"

Smiling, Timothy replied, "Sir, that is everything."

It is everything. I think of Paul's great words on love in 1Corinthians 13. Paul ends by saying, "Make love your aim." Everyday we have the opportunity to "make love our aim." Everyday we have the opportunity to love Jesus Christ more than anything else. Everyday we have the opportunity to love others by what we say and do. My prayer is that in everything we do we may be a reflection of Christ's love. Make love your aim. It is everything.

God Bless,
Pastor Becky

IN THIS ISSUE:

Here's what you can expect to find:

Page 2: Greetings From Chrysalis Flight of Hope, Upper Room Announcement to Michigan, Church Rep. Search.

Page 3: Respected by All, Gathering Update, Behind the Scene Servants Policy (BTSS)

Page 4: BTSS Policy Continued, Nominations Procedure, and Nominees.

Page 5: Continued Nominees & Pilgrim Care.

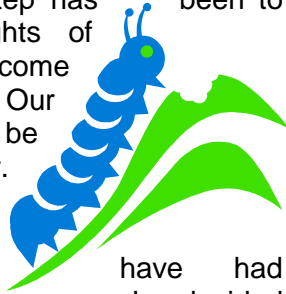
Page 6: Upcoming Events

Greetings!!!

I bring you greetings from Flight of Hope Chrysalis!

First, we'd like to thank you for the tremendous love, welcome and support that we've received from the Lansing Area Emmaus Community as we've come under your "umbrella" of care during the past months. What a blessing it has been for us to receive such a warm, loving welcome from all of you. That's even extended onto our new board as some of our members are now from your community.

The Chrysalis community has run into some of the same challenges as your community has faced in past years--not enough to hold a flight; not enough workers and other obstacles. We are trusting God to help us make a turn-around in this situation. Our first step was to come into alignment and under the directions of your Emmaus community. Our next step has been to figure out how to get full flights of caterpillars. We have prayed and come up with what we think will work. Our next two flights, boys and girls, will be held over Martin Luther King Jr. weekend in January and President's Day weekend in February. Other communities have had success with this scheduling and so we've decided to try it out. The benefits are that many schools already have that Monday off so we would not be taking school time away from our students and it alleviates the Friday night sports conflict that sometimes occurs.



With this schedule change, we have run into some other challenges but are very close to solving those issues too. We should confirm our sites very soon (look for an update on our website www.flightofhopechrysalis.com) This new schedule changes the day of both the candlelight and closing services too. Please mark your calendars for SUNDAY, January 16th and February 20th, 2011 for Chrysalis candlelight services. Closing will then be on the following Mondays.

We thank you again for your love and support and look forward to working with you more in future months!

GLYASDI,

Kathy Roberts
Community Lay Director
Flight of Hope Chrysalis

Community Reminder: Candelight & Closing

Please keep in mind that according to *THE UPPER ROOM HANDBOOK ON EMMAUS* Candelight & Closing are Community events. (Pg. 86 & 93) To be a member of the Community one must have attended a Walk or Flight or other sanctioned 4th day program. Please plan accordingly.



Announcement to the Michigan Emmaus Communities

We are blessed to announce the appointment of Judy McPherson as Assistant Regional Leader for The Walk to Emmaus. Judy's main responsibility will be to help plan and execute Leadership Development Events in Michigan, and shepherd the communities. Judy will help in encouraging our Mission to: Empower Leaders through Emmaus & Chrysalis to be the Hands and feet of CHRIST.

Judy is a member of the Lansing Area Emmaus Community and lives in Grand Ledge. She is currently serving as a board member for the second time since being a 4th Day member. Judy is serving as the Team Selection Committee chair. She has much experience in the Conference room, board room, and support roles.

Judy will be helping with needed communication, so all 9 Michigan communities may support each other and share information – working together for Christ's kingdom.

Please welcome Judy, as part of our Regional Leadership team. Her e-mail is mcpersonjudy@comcast.net

Cathi Eberly, Carl Wiggins, & Steve Haug
North Central Regional Leaders

My name is Jen Milam. I took my Flight in February of 1990 in Southeast Michigan Emmaus community, where I sat at the Table of Posterity. My husband and three daughters are the greatest blessings in my life! It is my privilege to serve as the Chrysalis Board Outreach Chair.

Currently, we are looking for individuals or teams to be Chrysalis representatives in their home church. If people in your church ask you their Emmaus / Chrysalis questions, then you are already serving Christ in this way.

Please let me know who you are so I can provide you with Chrysalis information.

Also, we would like to start some Fourth Day Groups for Butterflies. Any Butterflies out there that are looking to connect with a Fourth Day call me! This is the perfect time to have friends in Christ to share the ups and downs!

Many blessings to you during this beautiful time of year!

In Christ, Jen Milam
Chrysalis Board Outreach Chair

Respected by All...

All of us want respect. I don't care how much money you make or what car you drive or what job you have, each human being wants to be respected for their input into the greater scheme of things. Why the diatribe?

Maybe this will help? I was traveling to pick up our kids from my parents over by Muskegon when I looked in my rear view to see a dark, tinted-glass station wagon pushing up my backside. And when I moved over so he could pass, I read a saying on his back windshield, "Loved by a few. Hated by most. Respected by all." Really?

My wife and I pondered this saying a bit as the kids played their Nintendos in the back seat. Obviously this person thought themselves to be some kind of rebel who commanded respect by his say so. I actually do know some people like that! ☺ But Jesus had another way. He taught that the way to be the greatest in the kingdom was to be servant of all...that's what gets respect. It has little to do with false bravado, but everything to do with how we define ourselves deep down.

So, if you want to be great...serve. If you want to be respected...do something respectful. If you decide that you want to reinvent that life of yours, then, instead of stickers in your back window that show off the chips on your shoulder, be honest and humble and helpful instead...then maybe you can become someone truly respected by all for all the right reasons.

By Pastor Greg Buchner, United Church of Ovid

Gathering Update!

By Karen McLendon

Page 3

Gatherings for the Lansing Area Emmaus Community are the 2nd Friday of each month except for months where there is a Walk, we then gather together for candlelight service. The last four gatherings for 2010 are scheduled as follows:

October 9, 2010 Men's Candlelight Service Plan to Gather at 7:30pm for fellowship, followed by candlelight service at the United Church of Ovid, Ovid, MI

October 23, 2010 Women's Candlelight at Ovid Plan to Gather at 7:30pm for fellowship followed by candlelight service at the United Church of Ovid, Ovid, MI

November 12, 2010 Fellowship – 6:00 – 6:30 – Potluck starts at 6:30 PM – Worship and Sponsorship Training to Follow Dinner Pilgrim United Methodist Church, 2965 West Parks Road, St. Johns, MI 48879

December 10, 2010 Fellowship – 6:00 – 6:30 – Potluck starts at 6:30 PM – Worship and Sponsorship Training to Follow Dinner Pilgrim United Methodist Church, 2965 West Parks Road, St. Johns, MI 48879

The average attendance at gatherings has been 60 – 70 individuals including children. There is day care available at the gatherings and the gatherings are for family members as well as the Emmaus Community.

The Gathering Team will be meeting this Fall to look at themes for gatherings next year. If you have any suggestions for themes for gatherings next year, please e-mail your suggestion to me at lae.gathering@gmail.com or Karen@mclendon.ws and the Gathering Team will be glad to consider your suggestion as we prepare for 2011 gatherings.

On behalf of the Gathering Team, we hope you can attend the gatherings above for fellowship, music and worship. However, if you can't attend regular monthly gatherings, please plan to attend the gathering for candlelight service at the Men's Walk and Women's Walk in October.

God is Good – All the Time, All the Time - God is Good!!

LANSING AREA EMMAUS

Board Policy Regarding Behind the Scenes Servant Positions

In an effort to streamline the selection for Behind the Scene (BTS) servants for the Walk to Emmaus Weekend, the board has established the following protocol:

Behind the scenes support roles may be performed by different persons; the more persons involved, the healthier the Emmaus community becomes. The principle to remember is to involve as many different people as possible from every geographic region of your community for every Walk. Avoid the temptation to reuse people just because they want to serve or because it's easier than recruiting new people. Keep in mind the dual focus of community health and leadership development. Anyone who has attended a Walk to Emmaus, Chrysalis event, or another recognized Fourth-Day event may work in a support. Progressive servanthood begins with prayer and service behind the scenes.

Each Board member with a specific support assignment will be given contact list, provided by Team Selection, for their respective work area. The Board member(s) or one of their committee members will contact the community member in descending order on the list until a team leader servant or coordinator position has been filled. Co-positions (two people sharing responsibilities) will not be utilized. Board members will not add, subtract or skip over names from the lists. Partial weekend fill-in's are to be used sparingly. Additional names will be provided by Team Selection in the event the list is gone through before a team leader servant or coordinator position is found. When calling prospective candidates Board members will complete the contact information for the BTS contact sheets.

Once the position is filled the contact information and remaining names on the list will be returned to the Team Selection Chair. All positions should be filled four months prior to a walk weekend.

The above mentioned contact lists will be prepared by Team Selection for each BTS position. The lists are compiled from records held by the community such as volunteer preferences, experience, and community involvement and progressive servanthood criteria. The reasoning for using the list to ensure new community members have an opportunity to work and to progress in to further leadership roles. All of the names are prioritized and are authorized by the Board of Directors for further leadership training. The lists are also provided as an aid to board members and team leaders in finding members in the community to hone their leadership through

servanthood.

Each team leader will be provided a job description and a contact list to use for their team. It is their responsibility as the leader to build their team. Team leaders will use the contact list provided. They are not to add, subtract or skip over names from the lists. Additional names will be provided by Team Selection in the event the list is gone through before each team position is filled. The team leader or team selection member will keep their coordinator advised when more names are needed. When calling prospective candidates team leaders will complete the contact information for the BTS contact sheets. Once the positions are filled the contact information and remaining names on the list will be returned to either the weekend food service or weekend facilities coordinator under which they serve. The coordinator will turn the list over to the Team Selection Chair prior to the orientation meeting. All team positions should be filled three months prior to the walk weekend in which they will serve.

For Safety reasons and for the benefit of progressive servanthood, community members should not expect to "show up" on the weekend and be given work to do. Community members will be allowed in the building at the appropriate time for the Candlelight Gathering and the Candlelight service. Community member are to move quickly and quietly while in the hallways of the building going to and from services.

Weekend Servant Coordinator

This role is mandated by the Upper Room. This person is responsible for coordinating all Behind-the-Scenes Support efforts for an Emmaus Weekend. The person selected for this position is to have extensive Behind the Scenes (BTS) experience, posses a broad knowledge of all BTS positions and support needs of a walk weekend, and of the Emmaus Model. Persons to be considered for this position should include those who are qualified to be a Walk Lay Director, past Walk Lay Directors, past Community Lay Directors, and past Board members. The Community Lay Director and board may choose this person, by vote or consensus. This position is not required to progress to a Walk Lay Director.

Weekend Food Service Coordinator

This role will be responsible for all food, cooking and food serving related services for the entire walk weekend. That will include the kitchen team leader, dining room team leader, snacks team leader, host/hostess team leader and coordinate Thursday night light meal for the sponsors and their pilgrims. This position satisfies the BTS requirement to progress to a Walk Lay Director.

Weekend Facilities Coordinator

This role will be responsible for working with the following team leader positions on the weekend: Agape, Data, Prayer, Set -Up, Teardown, Housekeeping, Sponsor Hour, Candlelight-Closing, Luggage, and Sponsor Hour. This position satisfies the BTS requirement to progress to a Walk Lay Director.

The Nominating Committee Procedures

The major responsibility of the nominating committee is to present a slate of nominees for the Board of Directors before the annual election for board approval. Members of the committee shall work constantly - listening, seeking, observing, being available and accessible, and determining the needs of the community and who can best serve in each position. This 2009 procedure supersedes all previous policies and procedures approved by the Lansing Area Emmaus Board.

Composition of the Committee

The Assistant Community Lay Director (ACLD) will serve as the chairperson of the Nominating Committee. The ACLD will appoint at least two to four other non-board community members to serve on the committee.

Qualifications for members of the Committee

- Acceptance of the basic philosophy and purpose of the Emmaus Movement and the principles and policies of the Emmaus Model
- Broad acquaintance with members of the community
- Willingness to participate fully in the work of the committee
- Ability to provide objective and subjective information about potential nominees
- Ability to maintain complete confidentiality about the nominees and other considerations of the committee
- Willingness to provide to prospective nominees complete information about board member roles and responsibilities

Specific functions of the Nominating Committee

- Gather information about possible lay candidates for Board of Directors' positions from all available sources
- Select and secure persons with ability and willingness to serve
- Prepare a slate of not less than ten (10) nominees for every seven (7) openings
- Provide biographical data about each nominee, especially church and Emmaus experience. Include reasons for wanting to serve as a board member

Specific duties of members of the Nominating Committee

- Study the bylaws and policies of the Board of Directors
- Participate actively in all meetings of the committee by sharing fully in the discussion and decision-making
- Observe the operations of the Board in session
- Carry out assignments as delegated by the chairperson of the Nominating Committee Participate actively in the life of the community, including service on Walks, and attendance of Gatherings, Candlelight, Closing, and other activities, in order to observe community leaders and to identify individuals with potential for service

Specific duties of the Nominating Committee Chairperson

- Appoints committee members

Nominees for the 2011 Board

Ed Milam (2 yr term) - Hi, my name is Ed Milam and I am looking forward to the opportunity to serve the Lansing Area Emmaus Community on the board. I have been on the board for one year and it has been a blessing to serve.

My wife Jen and I have three daughters and we worship at Potterville UMC. We are a very active family in our local church. I also coach football at Potterville High School. I am currently in the candidacy process to become a licensed local pastor.

I am willing to serve this community with everything that God has blessed me with. I feel very strongly that God uses the Walk to Emmaus program to grow leaders and vault people into new and exciting ministries.

Terrie Eisenmann (3 yr term) - has served our Lord and Savior in the Lansing Area Emmaus Community Board as Registrar and Prayer Coordinator, and has been active in the LAEC since her walk in 2004. She is completing her 4th and final year as Heartland District Mission Chair, is a certified United Methodist Lay Speaker, Mission Chair at her home church Faith UMC Edmore, VBS leader, Sunday School teacher, and is passionate about serving God's children in Haiti as a short term United Methodist Volunteer in Mission. She is passionate about Haiti and preparing to embark on her ninth mission trip there. She will lead a team of 11 in February 2011 to complete work on a church and teach Bible school to children at Mrs. Eddy's orphanage in Roseaux.

- Prepare the agenda for committee meetings
- Call and preside at meetings of the committee
- Extend invitations to serve to those prospective nominees agreed upon by the committee and approved by the Board of Directors
 - Keep updated written procedures and other important information and provide to next Nominating Committee Chairperson to provide consistency and continuity from year to year.
- Keep the Board informed of the committee's progress
- Encourage potential nominees to attend board meetings
- Notify nominees by telephone or in person whether or not they have been elected.
- Prepare and present the final report on the work of the committee and the slate of nominees to the Board of Directors
- Provide a list of newly elected board members to the Community Lay Director for notification to the Upper Room of new board members
 - Provide a list of newly elected board members to Webmaster for inclusion on community web page
- Help each committee member contribute to the work of the committee.
- Retain the ballots in a secure location for six (6) months. The ballots shall be destroyed by June 1 the following year.

Work Schedule for the Nominating Committee

- Review schedule for committee's work
- Study the bylaws and policies of the Board of Directors
- Review make-up of current Board to determine anticipated vacancies
- Meet and compile a list of potential nominees by August 1
- Contact potential nominees, using a format put together by the nominating committee, answering questions, explaining duties and responsibilities, obtaining biography.
 - Plan the January Retreat, including agenda, church, dates and times.
- Prepare the final slate by August 31 and present to and request approval of the Board at the September meeting.
 - After September meeting, call all approved nominees and invite them to the October board meeting and gathering.
 - Mail ballot with instructions and deadlines by first class mail to all Lansing Area Emmaus Community members to be received by them on or before October 1 and returned no later than November 1.
 - Provide a ballot in unique color or other unique format. Duplicated ballots will not be accepted. Provide space for as many as three (3) Emmaus community members per household.
 - Meeting convened of nominating committee to count ballots and prepare to present to the Board of Directors at November meeting for certification.
 - Encourage new board members to attend the November Board Meeting to be presented to the Board members.
 - Encourage them to also attend December meeting and provide board meeting dates and other important information needed. Notify them of January Retreat.
 - Encourage nominees not elected to get involved in committees and encourage board members to call non-elected nominees to serve on committees.
 - Provide a list of non-deliverable ballots to database board member for updating the community database.
 - Finalize plans for training new board members and January Retreat.

Karen McLendon (2 yr Term) - I took my Walk to Emmaus in October 2003 at the Mt. Pleasant United Methodist Church, Walk #57. I sat at the table of Sarah. I currently serve the community as Gathering Chair. I am a member of the Potterville United Methodist Church where I serve as Financial Secretary, participate in the choir, and am a lay speaker. I also lead a Bible Study on Saturday mornings – Saturday Sisters. I am part of a 4th day group each week to help keep my faith journey moving in the direction God wants for me. I live in Potterville, have three grown sons, Aaron and his wife Maria, Curtis and his wife Amanda and Blake and his wife Jenna. I have 5 grandchildren, Michaela, Faith, Leta, Xander and Kael. I enjoy swimming, reading, and spending time with my sisters and brothers in Christ and my greatest joy is spending time with my children and grandchildren. The most memorable experience with Emmaus is the wonderful support and friendships this community has given to me over the past few years. I look forward to serving you on the Board.

New Modifications to the Bylaws, 2010, Article 4, Section 5 e & f:

- e. Elections shall be held annually at the October gathering. All members of the community present at the gathering shall be entitled to vote. Notice of the members on the ballot shall be listed in any newsletter published before the meeting, or sent to the community by email or other form of delivery approved by the board not less than ten (10) nor more than sixty (60) days prior to the election.
- f. Members who wish to vote, but not attend the October gathering may vote by absentee ballot. They must deliver their ballot to any current board member prior to the date of the October gathering. Absentee ballots shall be delivered to the Community Lay Director at the October gathering. Ballots may be submitted electronically, by mail or other delivery service, or hand delivered. Absentee ballots must be contained in a sealed envelope, with the member's name on the outside of the envelope, unless delivered electronically.

Hello,

My name is Deb Bongard and I took my Walk to Emmaus in October of 2002 and I sat at the table of Ruth. I am honored to serve you as your registrar for the Lansing Area Emmaus.

When I was on my walk, I suffered from severe headaches most of the weekend. My experience over those 72 hours was deeply meaningful and I learned a lot, but the headaches were an unwanted distraction. It didn't hit me until almost Sunday morning why my head was hurting. No diet coke!!! Like most coffee drinkers, when I go without caffeine, I get headaches from lack of caffeine, but I don't like coffee. There was plenty of coffee in the mornings for our coffee drinkers, but no diet coke until later in the day, when it was too late to stop my headache. My husband, who seems to have some sort of attachment to that little brown bean, doesn't seem to understand that I not only don't like the taste of coffee, I really don't like the smell of it either. He keeps trying to get me to come over to the "dark side" and try it. Ok, Troy, read my lips, "FORGET IT!"

As we sponsor pilgrims, we should be aware of our pilgrim's wants and needs when they are on their 72 hour weekend. Do they need childcare? Does a pilgrim's spouse have a need? What is your pilgrim's favorite snack? Favorite drink? Can your pilgrim sleep on a 3" foam pad? Or does s/he need something different to sleep on?

It's not going to be possible to anticipate everything that your pilgrim will want or need, but with a little due diligence and a little work, 99% of your pilgrims need's will be taken care of. They then can concentrate on why they are on their weekend, and not be distracted by something that is wanted or needed.

G.L.Y.A.S.D.I

Deb

Upcoming Events

October 7-10, 2010 Lansing Men's Walk #77, United Church of Ovid. This is the first time we are having a Men's Walk in several years. Be sure to sign up early!

October 8, 2010 Lansing The Gathering this month will be at the Candle Light of both the Men's Walk. 7 P.M. Sponsorship Training; 7:30 pm Gathering; 9:00 pm Candle Light Service begins.

October 11, 2010 Lansing Emmaus Board Meeting 7:00 PM Pilgrim U.M.C., St. Johns.

October 21-24, 2010 Lansing Women's Walk #78, United Church of Ovid.

October 22, 2010 Lansing Candle Light Gathering 7:00 pm Sponsorship Training; 7:30 pm Gathering; 9:00 pm Candle Light Service begins.

October 11, 2010 Lansing Emmaus Board Meeting 7:00 pm Pilgrim U.M.C., St. Johns.

October 21-24, 2010 Lansing Women's Walk #78, United Church of Ovid.

October 22, 2010 Lansing Candle Light Gathering 7:00 pm Sponsorship Training; 7:30 pm Gathering; 9:00 pm Candle Light Service begins.

November 9, 2010 Lansing Emmaus Board Meeting 7:00 pm Pilgrim U.M.C., St. Johns.

November 12, 2010 Lansing Gathering. Pilgrim U.M.C., St. Johns. Gather at 6pm, Potluck at 6:30, Worship at 7 pm, Sponsorship Training at 8 P.M.

December 10, 2010 Lansing Gathering. Pilgrim U.M.C., St. Johns. Gather at 6pm, Potluck at 6:30, Worship at 7 pm, Sponsorship Training at 8 P.M.

December 14, 2010 Lansing Emmaus Board Meeting 7:00 pm Pilgrim U.M.C., St. Johns.

January 15-17th, 2011 Flight of Hope Chrysalis, Girls flight. Wesley Foundation at Western Michigan University Kalamazoo. Sunday, January 16th, 2011 Candle Light Gathering 7:30 pm, Candle Light Service begins 9:00 pm.

February 19-21st, 2011 Flight of Hope Chrysalis, Boys flight. Wesley Foundation at Western Michigan University Kalamazoo. Sunday, February 20, 2011 Candle Light Gathering 7:30 pm, Candle Light Service begins 9:00 pm.

Newsletter Deadline for Next Issue

If you have an idea for a story, please let me know by November 1, 2010. Contact Russ Fries, lae.cld@gmail.com

Visit our Website:

www.lansingemmaus.truepath.com

IMS Database: Link from our Website using Internet Explorer. Log on and sign up to work a walk.

As of 9/14/10

Both Walks Are a GO!!!

30 Men are signed up for Walk #77

22 Women are signed up for Walk #78

Pilgrim U.M.C.
Lansing Area Emmaus
2965 West Parks Road
St. Johns, MI 48879

Non-Profit Organization
U.S. Postage
St. Johns, MI
Permit #16